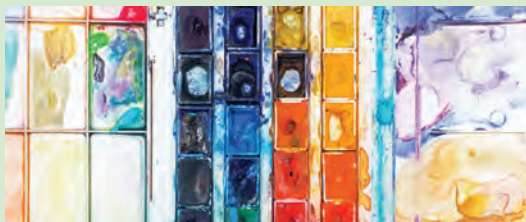


SPOKANE Watercolor Brushstrokes SOCIETY

Encouraging watercolor artists and promoting their growth

Spokane Watercolor Society • PO Box 10572, Spokane WA 99206 • swsmembermail@gmail.com • spokanewatercolor.org



THE MESSY PALETTE

2019 has been a really great year for SWS—an informative line-up of meeting programs, an engaged and very enthusiastic Board of Directors, new members joining us all year long. Wow!

It is going to be a really great year in 2020 too. We're going to learn new techniques and take advantage of some great opportunities to show our work. We anticipate leadership changes and continuing to add members who bring new ideas and skills to our group. Wow and whoo hoo!

All of these things help us to align with our purpose to encourage watercolor artists and promote their growth. We hope that it has been a profitable year for each and everyone of you and we look forward to exciting new artistic endeavors in 2020.

Joy and peace as you celebrate and spend time with family and friends this festive time of year... and hopefully there will be time for painting too!

—Kim Gardell, SWS President, 2019

PAINT -N- PARTY

SWS December 2019 Meeting



There was a bustling roomful of SWS members in the holiday spirit at the December SWS meeting. A delicious potluck of holiday treats was enjoyed by all.

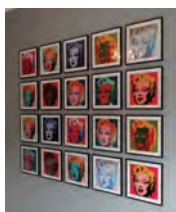
Morgan of Spokane Art Supply (SAS) announced that SAS was giving each member in attendance an Aqua Elite brush for Christmas. **THANK YOU!**



Guest **Grace Guo** came with member **Alva Keisbuy** and new member **Mary Lou Martin** was introduced and shared some of her work.

Challenges for November (Daring-30 minute painting)

and December (Gifts-Wet on wet)-7 participants with some great entries. Drawing winners were **Kathy Eckeridge** and **Nancy Huck**. Each received a \$15 gift certificate to SAS. Nancy Huck introduced the Challenge for January, "One or more." Paint a one color value study of a subject of your choice. See the website and FB page for Nancy's demo and instructions.



Amalia gave an update about the July show at Spokane Art School. We have a goal of 96 pieces for the watercolor painting "quilt." 80 slots have been filled. To sign up and reserve your materials, email Amalia at fischamalia@gmail.com. She made special note that painters need to paint to the edge of the 8.5" square paper supplied. Make sure to read over the information about this project emailed to all members and also posted on the website.

project emailed to all members and also posted on the website.

SWS members have opportunity to have an artist page on the SWS website. Gail requested that members submit their information and paintings by logging in to the member portal and following the instructions to upload information in the links provided. To be respectful of her time, please follow the procedure she has set up.





Becky Gromlich gave a fun demo on painting a card. It was a bright picture of berries on a dramatic dark background. She wrote, *“Thank you all for being such a wonderful class and for being extra quiet in order to accommodate my small voice!! ...The variety was wonderful! I hope all of you post them on the Member FB page when you’re done.”*



INSTRUCTION AND SHOWS:

- Becky teaches workshops in her home studio and says for those who want more information about her classes to send her your email address and she will add you to her mailing list. You can also like her FB page **Becky Gromlich Watercolors** or friend her on her **Becky Gromlich** profile page.
- **Vicki West** is a resident artist at the Grant Gallery and mentioned she also give private lessons.
- **Amalia Fisch** has work in the Artworks on 29th Gallery.
- **Margo Sety** has a show in progress at ChewVino in Chewelah.
- **Linda Calahan** has work at the Liberty Gallery upstairs in the Auntie’s Bookstore building.
- **Karen Robinette** has a show starting in January at the Craftsman Cellars in Kendall Yards.

JANUARY MEETING:

Saturday, January 18th • 10am at Spokane Art Supply
PROGRAM: “Showing Your Work Tutorials”

NOTE: If you need help to enter the 2020 Open Juried Show, bring your completed painting to the meeting.

2019-2020 CALENDAR

DECEMBER

DEC 5-JAN 28 – Margo Sety “Well Placed” Solo Exhibit at ChewVino: N 101 4th St East, Chewelah, WA—Check on FB for venue hours.

DEC 31 – Deadline for SWS member discount registration for Dale Laitinen Workshop.

JANUARY

18 – SAT: 10am-1pm –SWS meeting at SAS* Program: Showing Your Work Tutorials- Interpreting a prospectus; finishing your work for a show; photographing your work; using CaFE (Call for Entries) plus other calls for artists online; and shipping options.

27 – MON: Deadline for 2020 Open Juried Show Entries (Please note that the CaFE entry deadline is MOUNTAIN Time).

FEBRUARY

15 – SAT: 10am-1pm –SWS meeting at SAS* Program: Alternative Finishes Demo (Part 1) SWS will provide all paper materials i.e. cradle-board, all materials to finish paintings, adhere, wax, and hang. Cost per 8x8” cradleboard plus materials (except paint!) \$10 each– purchase as many as you like for upcoming July Art Show. ONLY 16 SLOTS LEFT TO FILL! Email Amalia Fisch fischamalia@gmail.com to sign-up. More information is posted on the website.

CHECK OUT THE FACEBOOK PAGE FOR PLEIN AIR EVENTS, THEY WILL NO LONGER BE REGULARLY SCHEDULED ON THE LAST FRIDAY OF THE MONTH

*Spokane Art Supply

