

CALENDAR OF EVENTS

- Mar. 4 SWS Board Meeting via Zoom, Tuesday, 4:45 p.m. **NOTE CHANGE**
- Mar. 15 In-Person SWS General Meeting, Spokane Art Supply, Saturday, 10 a.m. Digital Composition DEMO by Andy Sewell of Viola, **SEE PAGE 2**
- Mar. 20 SWS MEN'S Breakfast Club, Molly's Café, Monroe & 3rd, Spokane, 9 a.m.
- Mar. 31 Hand Deliver accepted paintings to The MAC, 10:00 a.m. to noon
- Apr. 3— SWS National Watercolor Show, The MAC, Helen S Alexander Gallery
May 4 2316 W. 1st Ave., Spokane, Tuesday—Sunday 10-5, Closed Monday
- Apr. 7 SWS Board Meeting via Zoom, Monday, 4:00 p.m.
- Apr. 10-12 Michael Holter Workshop, Landscape in Watercolor
Spokane Art Supply, 1303 N. Monroe, Spokane, 9:30 a.m.—4:30 p.m.
- Apr. 13 Awards Reception, SWS National Show, with Michael Holter
SUNDAY, 1:00-3:00 p.m., The Mac, Helen South Alexander Gallery,
Spokane (This event will serve as our monthly SWS General Meeting)

Challenge
PAINTING
MARCH 15
HARD AND
SOFT EDGES
(or what's on your easel)
SUBJECT OF YOUR CHOICE

Time to Sign Up

for shifts at The MAC as
DOCENTS for the upcoming
national juried show..

Being a docent is fun, easy, and everything you need is at your fingertips! It is also a great way to have time to look at all the paintings in detail.

We will be using SignUpGenius this year to make scheduling simpler.

You DO NOT need to have the app OR have an account on SignUpGenius! Shifts are from 10:00-1:30 or 1:30-5:00 on days The MAC is open. Note the extra shift on April 30 as the MAC is open late on the last Wednesday of each month.

You can find a **direct link** at www.spokanewatercolor.org by clicking on the **DOCENT SIGN UP** button; you will be prompted to log in with your SWS user name and password. **E-mails will also be sent with the direct link, or you can contact me & I will send it to you.**

It is preferable that you sign-up using this program, but...if you can't do the sign-up online, contact me. Email, call, or text if you have questions. razzlebari@comcast.net, 509-710-1966 Thank you from Bari!

There are ads because the service is free. Just click through them.

SEE PAGE 2 for TIPS on painting Hard & Soft Edges!

BRING YOUR CHALLENGE PAINTINGS TO THE SWS GENERAL MEETING!



There are still a few spots left for the Michael Holter Workshop! Don't miss your chance! **TELL YOUR FRIENDS...POST A FLYER!**

Brushstrokes

March Demo with ANDY SEWELL Digital Composition

at the SWS General Meeting
Saturday, March 15, 10 am. to 12pm
Spokane Art Supply, 1303 N. Monroe



Andy is a resident of Viola, Idaho and is an award winning artist, graphic artist and art instructor. He has been painting and producing/selling his own prints and originals for the past 30 years. "I love to paint flowers and landscapes of the Northwest as well as fishing scenes, wildlife, rural farms, and the countryside. I paint in Plein air, abstract and works from photographs." Andy will show us how to use and combine photographs for winning compositions, and will provide suggested resources and computer programs that will aid you in this process.

CONGRATULATIONS to all those who had paintings accepted for the SWS National Show!

There were over 80 entries from across the country, and only 30 spaces at the Helen South Gallery at The Mac. If you didn't get in, please don't be discouraged and keep trying. SWS values all of our member artists, with their exceptional talent and unique styles. Remember, each juror is different and uses their own personal experience and judgement, and it is not a critique of the quality of your work. The list of accepted paintings is now on the SWS website.

MEMBERSHIP CORNER

The Board needs you!

There are a lot of various opportunities (including one board position) for you to share your skills and talents so that SWS can continue to provide quality shows and events. Please consider volunteering to help! If interested, please contact Kim at swspresident1@gmail.com.

THE NEW SWS MEMBER ROSTER IS NOW AVAILABLE ON THE SWS WEBSITE. LOG INTO YOUR SWS ACCOUNT TO ACCESS IT.



WELCOME NEW MEMBERS!

Michelle Cruickshank, Liberty Lake, WA
Carolyn Gallon, Hayden, ID
Cheryl Sachse, St. George, UT



YOUR PRIVACY IS IMPORTANT to Spokane Watercolor Society!

Your contact information is included in our roster, so that members can contact each other. This is only accessible by logging on to www.spokanewatercolor.org with your user name and password, under the heading "MY SWS". If you DO NOT want your contact information on this roster, please contact: swspresident1@gmail.com.

March Challenge Tips

By Diana Postlewait

HARD EDGES (also known as *Found Edges*), are used to **define an area**, where an object begins and where it ends. Hard edges **draw your attention** to that specific area by creating a sharp contrast. They **command the viewers attention** helping to lead the eye around the painting. **CREATING HARD EDGES** is very easy, use a hard line, light and dark/contrast and usually done with wet on dry.

SOFT EDGES (also know as *Lost Edges*), are used to **soften an area, create depth**, and in some cases, **hold your interest** (see the art work of Thomas Schaller). **CREATING SOFT EDGES** is usually done with wet into wet. However, you can soften a Hard edge after it is painted by running a wet brush next to it, brushing it with water and a stiff brush if the paint is really dry or if it is still wet, smudge it with your finger. Creating Soft edges can also be done with Glazing (February Challenge Painting).

A SIDE NOTE: I am always amazed at how Thomas Schaller uses light and dark, and hard and soft edges to guide the viewers eye around the painting and to the focal point. He is a master of the light and dark as well as hard and soft edges and glazing.



Brushstrokes

Feb Meeting Highlights



- VP Dan Eacret is consolidating the members lists into one comprehensive spreadsheet with all the pertinent information. **Please check the new roster (on the SWS website) to make sure your information is all correct.**
- Sue Rohrback will be **coordinating the snacks** for the National Show awards reception **and would like volunteers to help.**
- **Brushstrokes** will now be available on the home page to view by anyone looking at the SWS website, as it is a good vehicle to give potential members an overview of SWS.
- Members were **enthusiastic about creating scholarships** for workshops, which will be taken forward by the board.

bari Federspiel

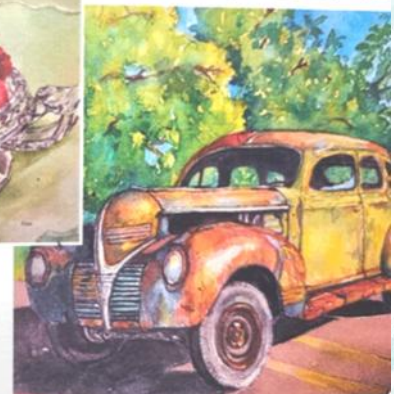
showing watercolor paintings & prints

203 N. Washington, Spokane (next to Auntie's Bookshop)
 HOURS; Sun-Thurs 10-7, Fri-Sat 10-9 (509) 327-6920

March 2025
 Guest Artist Show



Meet the artist on
First Friday,
 March 7, 2025
 5:00pm - 9:00pm



bari

MEMBERS' EVENTS



Becky Gromlich

watercolor artist/instructor
www.beckygromlich.com
 509.863.5392

Becky is super excited to be teaching and hopes to see some of you there.



WATER
COLOR
WORKSHOP

Painting Light!

beckygromlich.com

Spokane Art Supply
 March 21 and 22, 9 am to 4 pm
 \$125

Becky specializes in teaching people how to realistically capture life and beauty in their paintings. She also teaches unique and striking backgrounds!



Gloria Fox

in association with
 the River Ridge Assoc. of Fine Arts
 is showcasing her watercolor paintings
March & April 2025
 in the front gallery of

INDABA COFFEE

518 W. Riverside, Spokane, (509) 822-7182
 HOURS: 6 a.m. to 6 p.m. daily, kitchen closes at 2:00 p.m.

For more information, contact Gloria or
www.rrafaofspokane.com

Brushstrokes

FEBRUARY 2025 • page 4

Challenge Paintings

GLAZING

Beautiful work everybody!



Feb Demo Notes



Margo Sety gave us an information-packed, useful and practical demo on **Step by Step Framing**. She described her varied equipment (as she demonstrated its use) consisting of **mat cutters, various guides and rulers (measuring "chingamajigs") and hand cutters, along with various frame hardware and acid-free boards and tapes.** If you were unsure as to whether it is

worth investing in your own basic framing equipment, then Margot's opinion is a resounding yes! **It may pay for itself after just a few framing projects.** She has a larger Logan Cutter that can accommodate a full board and is suitable for measuring and cutting the outside dimensions of the boards, as well as glass. **The basic Logan mat cutter is a good starter** and a smaller price tag, but is not as versatile. Margot emphasized that using **acid free materials is crucial for a lasting finished product.** She also went through our current prospectus and explained terms, and **how to measure in order to comply with framing requirements.**

A wealth of invaluable information (way too extensive to report on) and hands-on demonstrations of her equipment is waiting in the archived recording of her demo

on the SWS website at www.spokanewatercolor.org.

THANK YOU MARGOT!
We all learned so much!



VICKI won the \$15 Gift Certificate to Spokane Art Supply! Congratulations!